

## Product Data Sheet

## MCI GEL™ CHP20/P70

MCI GEL™ CHP20/P70 is unique 70um rigid Styrene-DVB matrix. A controlled pore size distribution and large surface area offer excellent resolution and the capacity for a wide range of molecules, from small peptides and oligonucleotides up to large proteins. It offers nice balance of pressure flow characteristics and true chromatographic fractionation and has also been successfully applied in simulated moving bed applications for a variety of small bio molecules.

## Product

Grade Name	MCI GEL™ CHP20/P70
Type	Synthetic Adsorbents
Matrix	Styrene-DVB, Pourous

## Specification

Water content	%	55 - 67
Particle Size Distribution on 105 µm	%	5 max.
Particle Size Distribution on 74 µm	%	30 max.
Particle Size Distribution 63 - 74 µm	%	55 min.
Particle Size Distribution thr. 63 µm	%	15 max.

## Properties

Shipping Density	g/L	655
Particle Density	g/mL	1.01
Specific Surface Area	m <sup>2</sup> /g	620
Pore Volume	mL/g	1.1
Pore Radius	Å	230

## Recommended Operating Conditions

Maximum Operating Temperature	°C	130
Operating pH Range		0 - 14
Minimum Bed Depth	mm	500
Flow rate	BV/h	Loading 0.5 - 5
	BV/h	Displacement 0.5 - 2
	BV/h	Regeneration 0.5 - 2
	BV/h	Rinse 1 - 5
Regenerant		Organic solvents for hydrophobic compounds
		Bases for acidic compounds
		Acids for basic compounds
		Buffer solution for pH sensitive compounds
		Water for an ionic solution
		Hot steam for volatile compounds

# MCI GEL™ CHP20/P70

## Pore size distribution

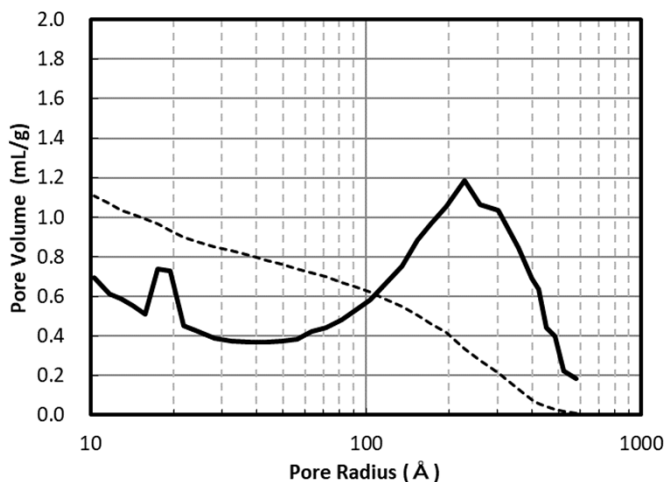


Fig. 1 Pore size distribution of CHP20/P70

## Swelling Ratio In Various Solvents

Methanol	1.21
Ethanol	1.21
2-Propanol	1.29
Acetone	1.30
Toluene	1.26
Acetonitrile	1.24
Water	1.00

## Hydraulic Characteristics

The approximate pressure drop at various temperatures and flow rates for each meter of bed depth of MCI GEL™ CHP20/P70 resin in normal down flow operation is shown in the graphs below.

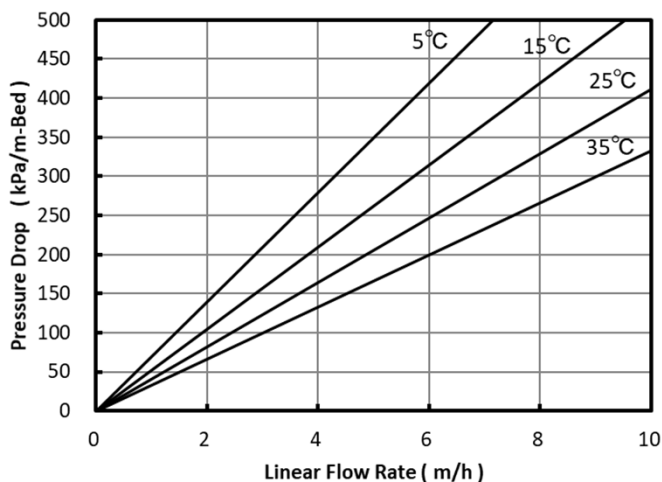


Fig. 2 Pressure Drop of CHP20/P70

### Indicative Applications

---

- Purification of small peptides, oligonucleotides and proteins
- Adsorption of vitamins, antibiotics, enzymes, steroids and other substance from fermentation solutions
- Decolorization of various sugar solutions
- Adsorption of fatty acids
- Removal of phenol
- Adsorption of various perfume
- Decolorization and purification of various chemicals

### Storage condition

---

Synthetic adsorbents are at high risk of mold growth. Accordingly, synthetic adsorbents should be stored properly. Properly stored synthetic adsorbent resins may be stored for up to one year after production before the onset of any mold growth is detected. Optimal storage is with a 20% alcohol solution such as ethanol or isopropanol. A 10% or higher concentration of salt solution, such as NaCl, is also recommended to preserve new or used resin for storage. In case salt cannot be used, a 0.01 to 0.02 N NaOH solution may be acceptable as mold cannot withstand survival at pH higher than 12. Storage at freezing temperatures should be avoided as it may cause breakage or crush certain resin particles.

### Notice

---

MCI GEL™ is a registered trademark of Mitsubishi Chemical Corporation. The information contained herein is believed to be true and accurate, but all data, recommendations and suggestions are provided without guarantee, since the conditions of use are beyond our control and can affect the performance and properties of our products. The user is solely responsible for confirming that our product is suitable for the intended end use, and for compliance with all legal regulations and patents. Other than compliance with published Mitsubishi Chemical Corporation specifications agreed to pursuant to a signed writing during the warranty period, and except as required by law, MITSUBISHI CHEMICAL CORPORATION AND ITS AFFILIATES MAKE NO WARRANTIES, EXPRESS OR IMPLIED, INCLUDING BUT NOT LIMITED TO ANY IMPLIED WARRANTIES OF MERCHANTABILITY OR FITNESS FOR A PARTICULAR PURPOSE, OR ANY WARRANTY ARISING OUT OF A COURSE OF DEALING, CUSTOM OR USAGE OF TRADE. If a product is found to be defective during the warranty period, user's sole remedy and our sole obligation is, at our option, replacement of the affected product or refund of the purchase price. Except as required by law, we are not liable for any damage, harm or loss resulting from our product, whether direct, indirect, consequential, incidental or special, and irrespective of legal theory asserted, including strict liability, contract, warranty, or negligence.